

THIS SURVEY MEETS STANDARDS AS OUTLINED IN CORPS OF ENGINEERS' HYDROGRAPHIC SURVEY MANUAL EM1110-2-1003, DATED NOVEMBER 30, 2013 FOR NAVIGATION AND DREDGING SUPPORT SURVEYS.

HORIZONTAL REFERENCE - NAD 83, NEW JERSEY STATE PLANE, ZONE 2900, U.S. FOOT.

VERTICAL REFERENCE - MEAN LOWER LOW WATER, WHICH IS 2.73' BELOW N.A.V.D. 88.

GEOID 18 AND NOAA TIDAL EPOCH: 1983 - 2001 WERE USED. SOUNDINGS ARE EXPRESSED IN FEET AND TENTHS AND REFER TO MEAN LOWER LOW WATER.

THE INFORMATION DEPICTED ON THIS MAP REPRESENT THE RESULTS OF SURVEYS MADE ON THE DATES INDICATED AND CAN ONLY BE CONSIDERED AS INDICATING THE GENERAL CONDITIONS EXISTING AT THAT TIME.

THE POSITIONS OF THE AIDS TO NAVIGATION ARE PROVIDED FOR INFORMATION ONLY, AND SHOULD NOT BE USED FOR NAVIGATION.

THE LIMITS OF THE FEDERAL CHANNEL DEPICT THE MOST CURRENT CHANNEL FRAMEWORK AVAILABLE WHICH CAN ALSO BE DOWNLOADED HERE:
<http://navigation.usace.army.mil/Survey/Framework>

BASE MAPPING LINEWORK OR ORTHOPHOTOGRAPHY HAS BEEN COMPILED FROM A VARIETY OF SOURCES AND DATES AND IS INTENDED TO PORTRAY GENERAL CHARACTERISTICS OF THE SHORELINE AND OTHER FEATURES. TEMPORAL CHANGES MAY HAVE OCCURRED SINCE THIS DATA SET WAS COLLECTED AND SOME PARTS OF THE DATA MAY NO LONGER BE AN ACCURATE REPRESENTATION OF THE SURFACE CONDITIONS.



US Army Corps of Engineers
Philadelphia District

MRK #441 to MRK #442 -- 13 JUN 24
MRK #442 to MRK #446 -- 26 JUN 24
MRK #446 to MRK #457 -- 04 DEC 24
MRK #457 to MRK #463 -- 27 FEB 24
MRK #463 to MRK #471 -- 26 FEB 24
MRK #471 to MRK #471 -- 22 FEB 24

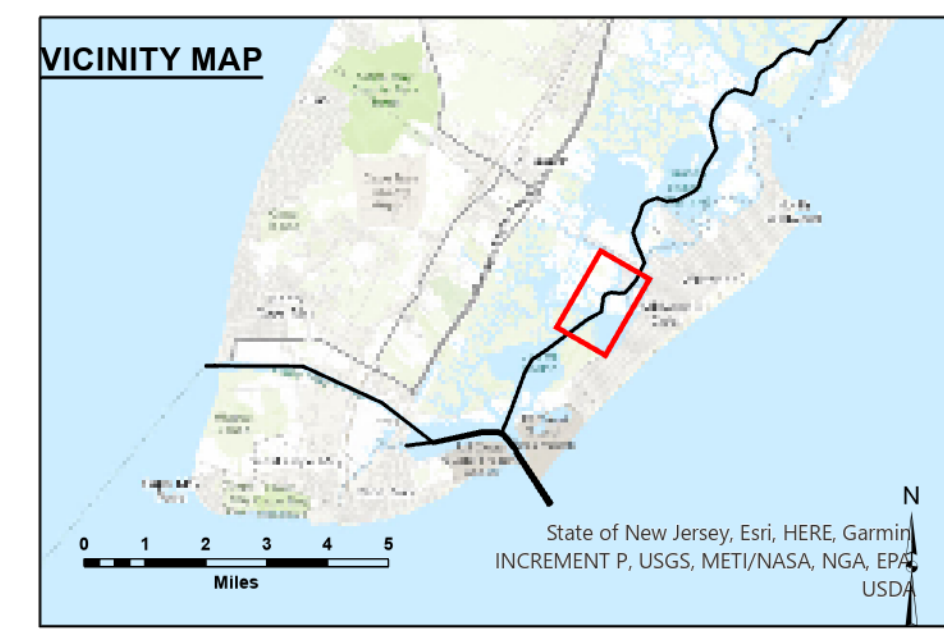
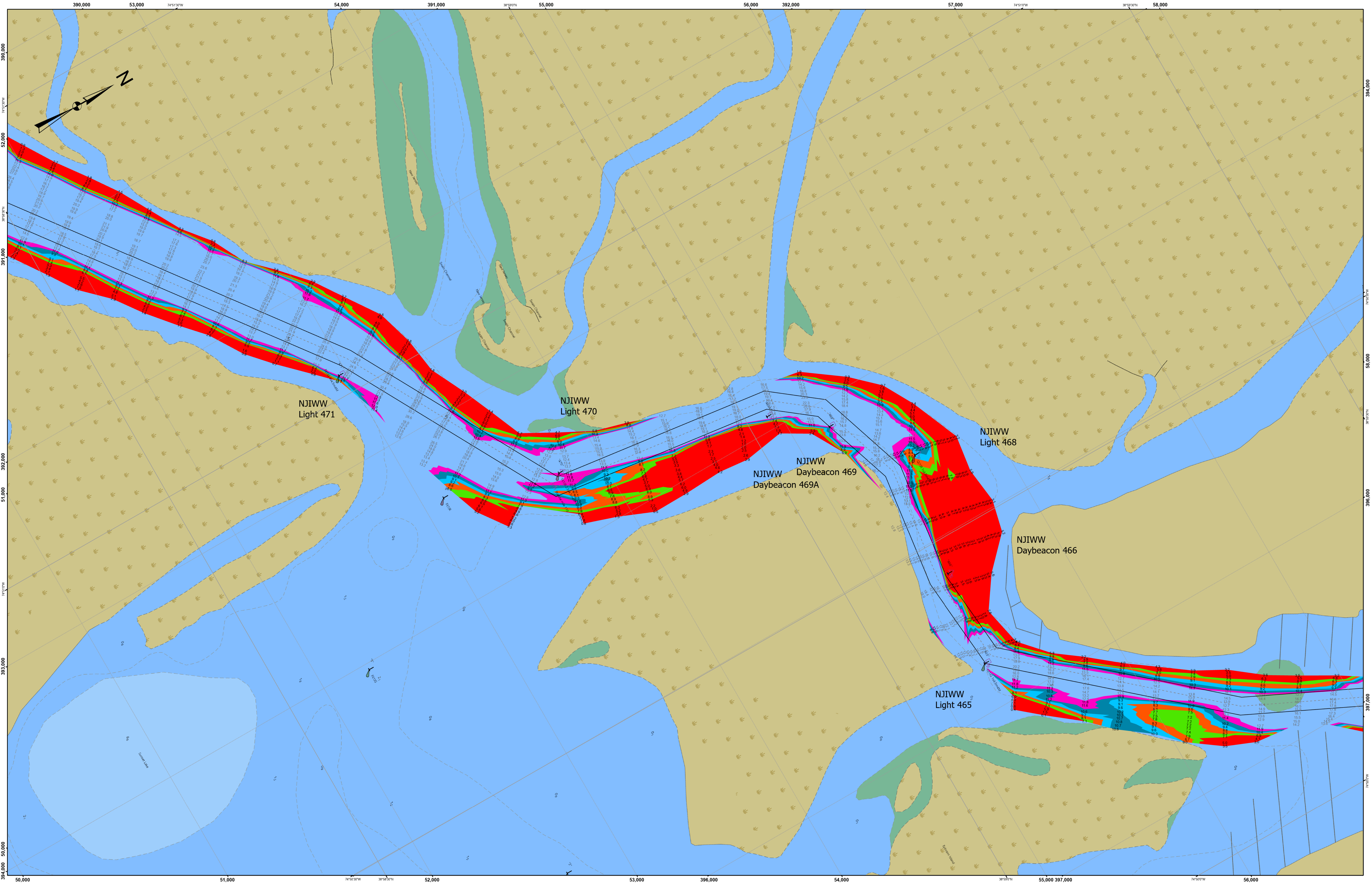
THE DATA IS PROVIDED FOR GENERAL INFORMATION ONLY. IT IS NOT TO BE USED FOR ANY PURPOSES OTHER THAN THAT FOR WHICH IT WAS COLLECTED. THE DATA IS NOT TO BE USED FOR ANY PURPOSES OTHER THAN THAT FOR WHICH IT WAS COLLECTED. THE DATA IS NOT TO BE USED FOR ANY PURPOSES OTHER THAN THAT FOR WHICH IT WAS COLLECTED.

US ARMY CORPS OF ENGINEERS
PHILADELPHIA DISTRICT

Surveyed By	Checked By
Created By	Field By
Print Scale	E. MILLER
Approved	Chief, Survey Section

NEW JERSEY INTRACOASTAL WATERWAY
IW 16 - MRK #441 to Cape May Harbor
EXAMINATION

E-IW-43



THIS SURVEY MEETS STANDARDS AS OUTLINED IN CORPS OF ENGINEERS' HYDROGRAPHIC SURVEY MANUAL EM1110-2-1003, DATED NOVEMBER 30, 2013 FOR NAVIGATION AND DREDGING SUPPORT SURVEYS.

HORIZONTAL REFERENCE - NAD 83, NEW JERSEY STATE PLANE, ZONE 2900, U.S. FOOT.

VERTICAL REFERENCE - MEAN LOWER LOW WATER, WHICH IS 2.73' BELOW N.A.V.D. 88.

GEOID 18 AND NOAA TIDAL EPOCH: 1983 - 2001 WERE USED. SOUNDINGS ARE EXPRESSED IN FEET AND TENTHS AND REFER TO MEAN LOWER LOW WATER.

THE INFORMATION DEPICTED ON THIS MAP REPRESENT THE RESULTS OF SURVEYS MADE ON THE DATES INDICATED AND CAN ONLY BE CONSIDERED AS INDICATING THE GENERAL CONDITIONS EXISTING AT THAT TIME.

THE POSITIONS OF THE AIDS TO NAVIGATION ARE PROVIDED FOR INFORMATION ONLY, AND SHOULD NOT BE USED FOR NAVIGATION.

THE LIMITS OF THE FEDERAL CHANNEL DEPICT THE MOST CURRENT CHANNEL FRAMEWORK AVAILABLE WHICH CAN ALSO BE DOWNLOADED HERE:
<http://navigation.usace.army.mil/Survey/Framework>

BASE MAPPING LINEWORK OR ORTHOPHOTOGRAPHY HAS BEEN COMPILED FROM A VARIETY OF SOURCES AND DATES AND IS INTENDED TO PORTRAY GENERAL CHARACTERISTICS OF THE SHORELINE AND OTHER FEATURES. TEMPORAL CHANGES MAY HAVE OCCURRED SINCE THIS DATA SET WAS COLLECTED AND SOME PARTS OF THE DATA MAY NO LONGER BE AN ACCURATE REPRESENTATION OF THE SURFACE CONDITIONS.

THE AUTHORIZED DEPTH OF THIS CHANNEL CHANGES FROM 6' TO 12' AT LIGHT 463.

Scale in Feet
200 0 200 400 600

Legend

- Shoalest Sounding per Quarter
- Channel Framework
- Centerline

6 - 30	5 - 6	12 - 55
4 - 5	4 - 5	11 - 12
3 - 4	3 - 4	10 - 11
2 - 3	2 - 3	9 - 10
1 - 2	1 - 2	8 - 9
-1 - 1	-1 - 1	7 - 8
		0.07 - 7

US Army Corps of Engineers
Philadelphia District

NEW JERSEY INTRACOASTAL WATERWAY
IW 16 - MKR #441 to Cape May Harbor
EXAMINATION

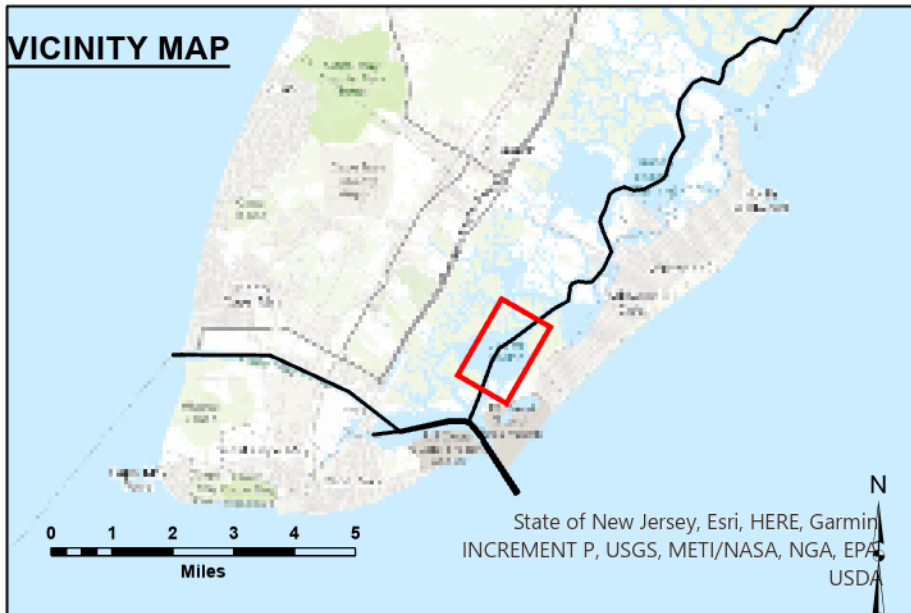
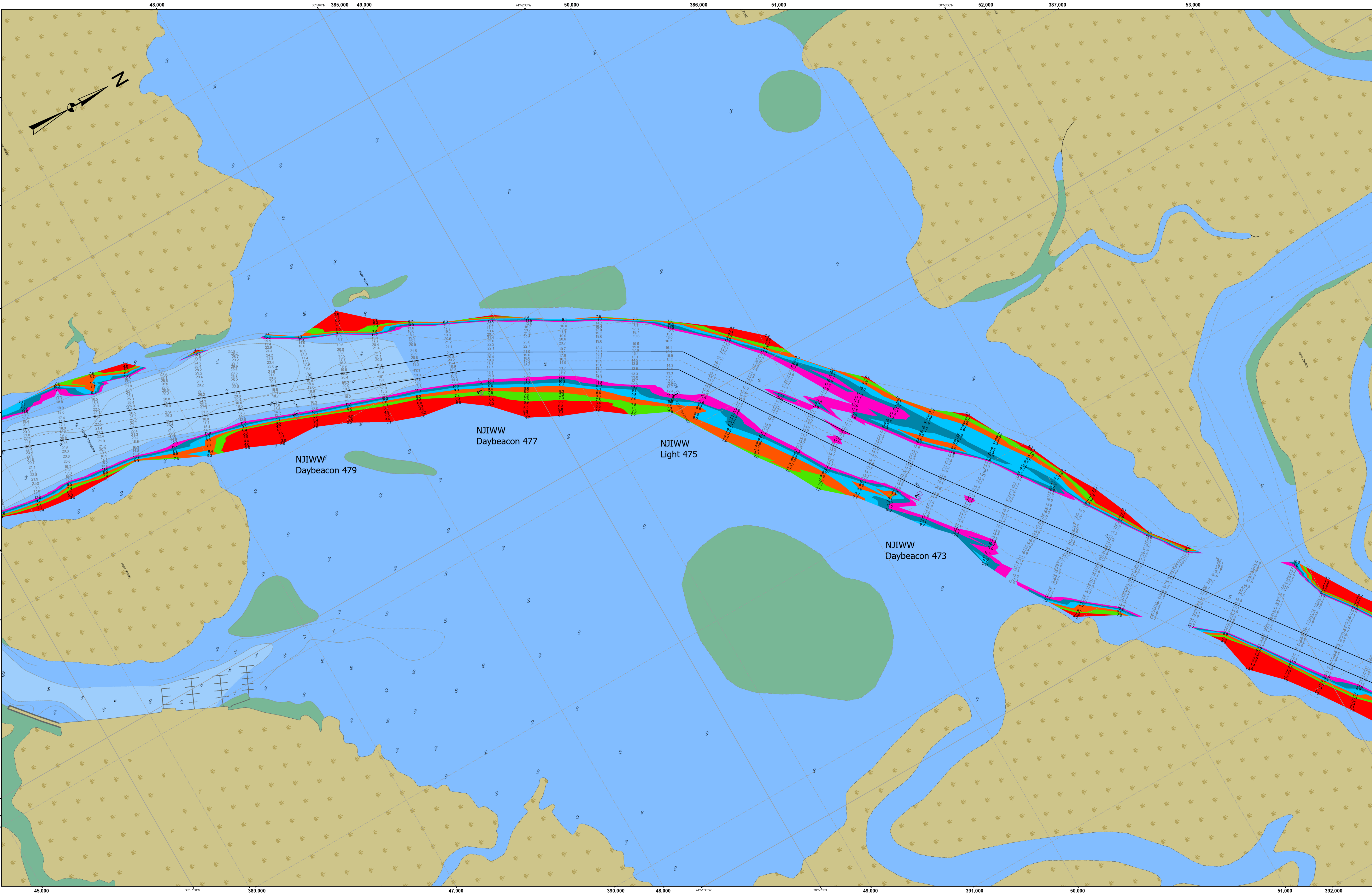
E-IW-43

Surveyed By: _____
Checked By: _____
Published By: _____
Final Scale: _____
Approved: _____
Chief, Survey Section

DISCLAIMER:
This data is provided for general information only. It is not intended to be used for navigation. The Corps of Engineers does not warrant the accuracy of the data. The Corps of Engineers is not responsible for any errors or omissions in the data. The Corps of Engineers is not responsible for any damages or losses resulting from the use of this data.

THE INFORMATION ON THIS MAP IS PROVIDED FOR INFORMATION ONLY. IT IS NOT INTENDED TO BE USED FOR NAVIGATION. THE CORPS OF ENGINEERS DOES NOT WARRANT THE ACCURACY OF THE DATA. THE CORPS OF ENGINEERS IS NOT RESPONSIBLE FOR ANY DAMAGES OR LOSSES RESULTING FROM THE USE OF THIS DATA.

MRK #441 to MKR #442 -- 13 JUN 24
MRK #442 to MKR #446 -- 26 JUN 24
MRK #446 to MKR #457 -- 04 DEC 24
MRK #457 to MKR #463 -- 27 FEB 24
MRK #463 to MKR #471 -- 26 FEB 24
MRK #471 to MKR #471CMH -- 22 FEB 24



THIS SURVEY MEETS STANDARDS AS OUTLINED IN CORPS OF ENGINEERS' HYDROGRAPHIC SURVEY MANUAL EM1110-2-1003, DATED NOVEMBER 30, 2013 FOR NAVIGATION AND DREDGING SUPPORT SURVEYS.

HORIZONTAL REFERENCE - NAD 83, NEW JERSEY STATE PLANE, ZONE 2900, U.S. FOOT.

VERTICAL REFERENCE - MEAN LOWER LOW WATER, WHICH IS 2.73' BELOW N.A.V.D. 88.

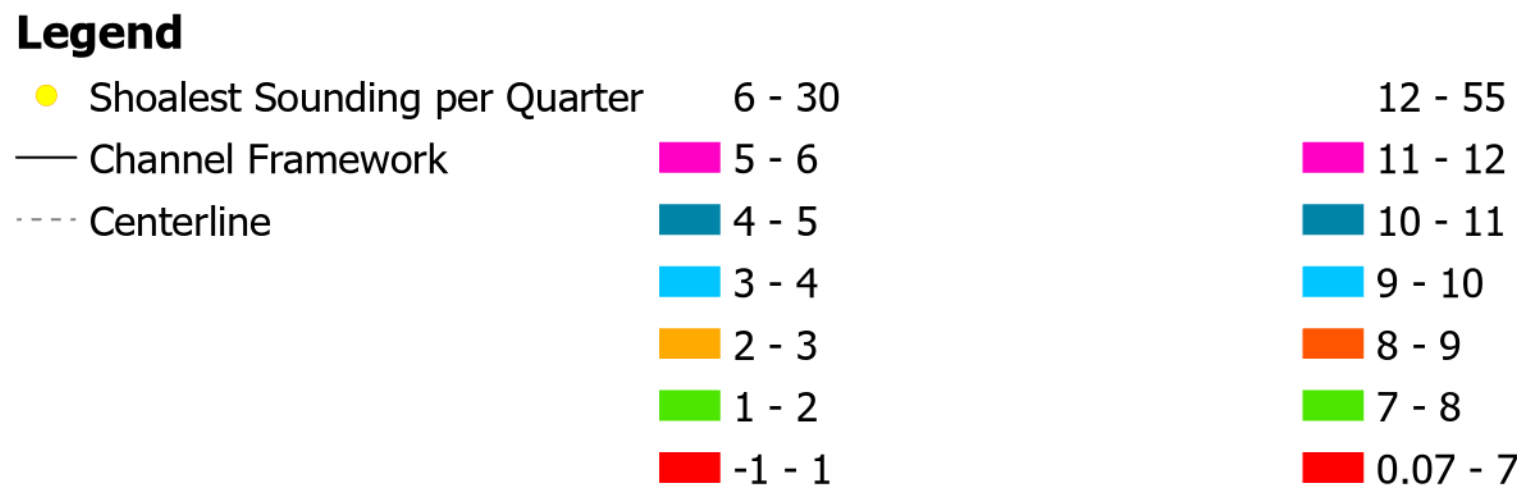
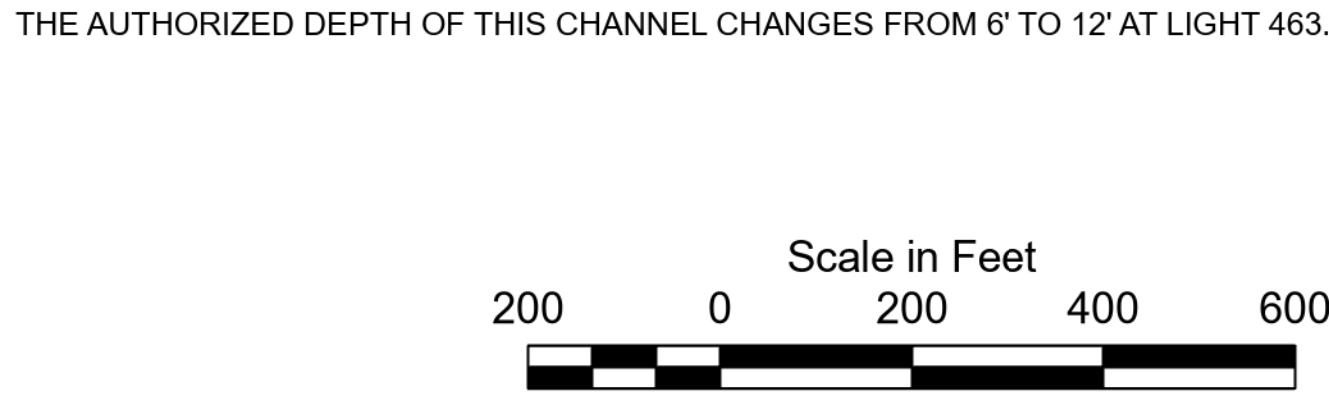
GEOID 18 AND NOAA TIDAL EPOCH: 1983 - 2001 WERE USED. SOUNDINGS ARE EXPRESSED IN FEET AND TENTHS AND REFER TO MEAN LOWER LOW WATER.

THE INFORMATION DEPICTED ON THIS MAP REPRESENT THE RESULTS OF SURVEYS MADE ON THE DATES INDICATED AND CAN ONLY BE CONSIDERED AS INDICATING THE GENERAL CONDITIONS EXISTING AT THAT TIME.

THE POSITIONS OF THE AIDS TO NAVIGATION ARE PROVIDED FOR INFORMATION ONLY, AND SHOULD NOT BE USED FOR NAVIGATION.

THE LIMITS OF THE FEDERAL CHANNEL DEPICT THE MOST CURRENT CHANNEL FRAMEWORK AVAILABLE WHICH CAN ALSO BE DOWNLOADED HERE:
<http://navigation.usace.army.mil/Survey/Framework>

BASE MAPPING LINEWORK OR ORTHOPHOTOGRAPHY HAS BEEN COMPILED FROM A VARIETY OF SOURCES AND DATES AND IS INTENDED TO PORTRAY GENERAL CHARACTERISTICS OF THE SHORELINE AND OTHER FEATURES. TEMPORAL CHANGES MAY HAVE OCCURRED SINCE THIS DATA SET WAS COLLECTED AND SOME PARTS OF THE DATA MAY NO LONGER BE AN ACCURATE REPRESENTATION OF THE SURFACE CONDITIONS.



US Army Corps of Engineers
Philadelphia District

MRK #441 to MRK #442 -- 13 JUN 24
MRK #442 to MRK #446 -- 26 JUN 24
MRK #446 to MRK #457 -- 04 DEC 24
MRK #457 to MRK #463 -- 27 FEB 24
MRK #463 to MRK #471 -- 26 FEB 24
MRK #471 to MRK #471 -- 22 FEB 24

THIS DATA IS PROVIDED FOR GENERAL INFORMATION ONLY. IT IS NOT TO BE USED FOR ANY PURPOSE OTHER THAN THAT FOR WHICH IT WAS COLLECTED. THE DATA IS NOT TO BE USED FOR ANY PURPOSE OTHER THAN THAT FOR WHICH IT WAS COLLECTED. THE DATA IS NOT TO BE USED FOR ANY PURPOSE OTHER THAN THAT FOR WHICH IT WAS COLLECTED.

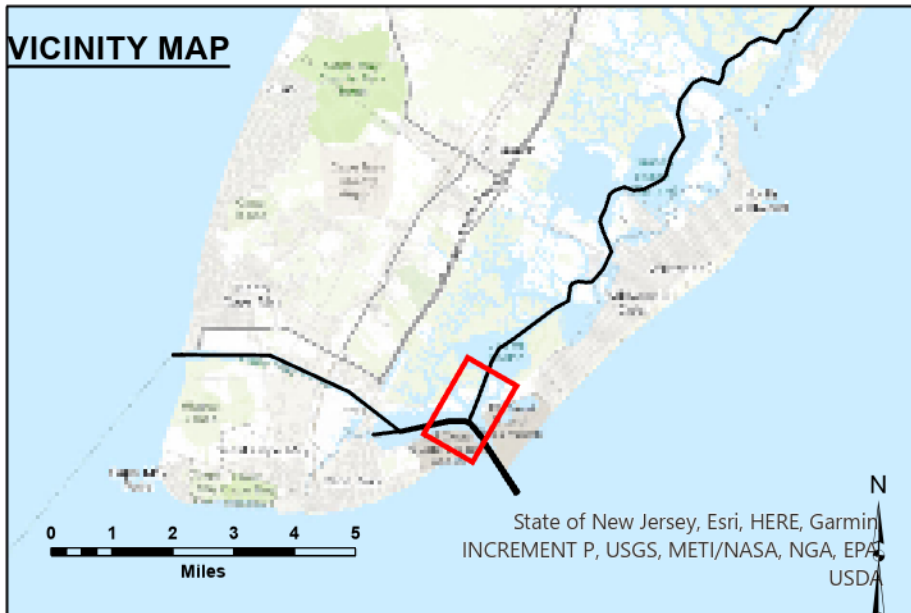
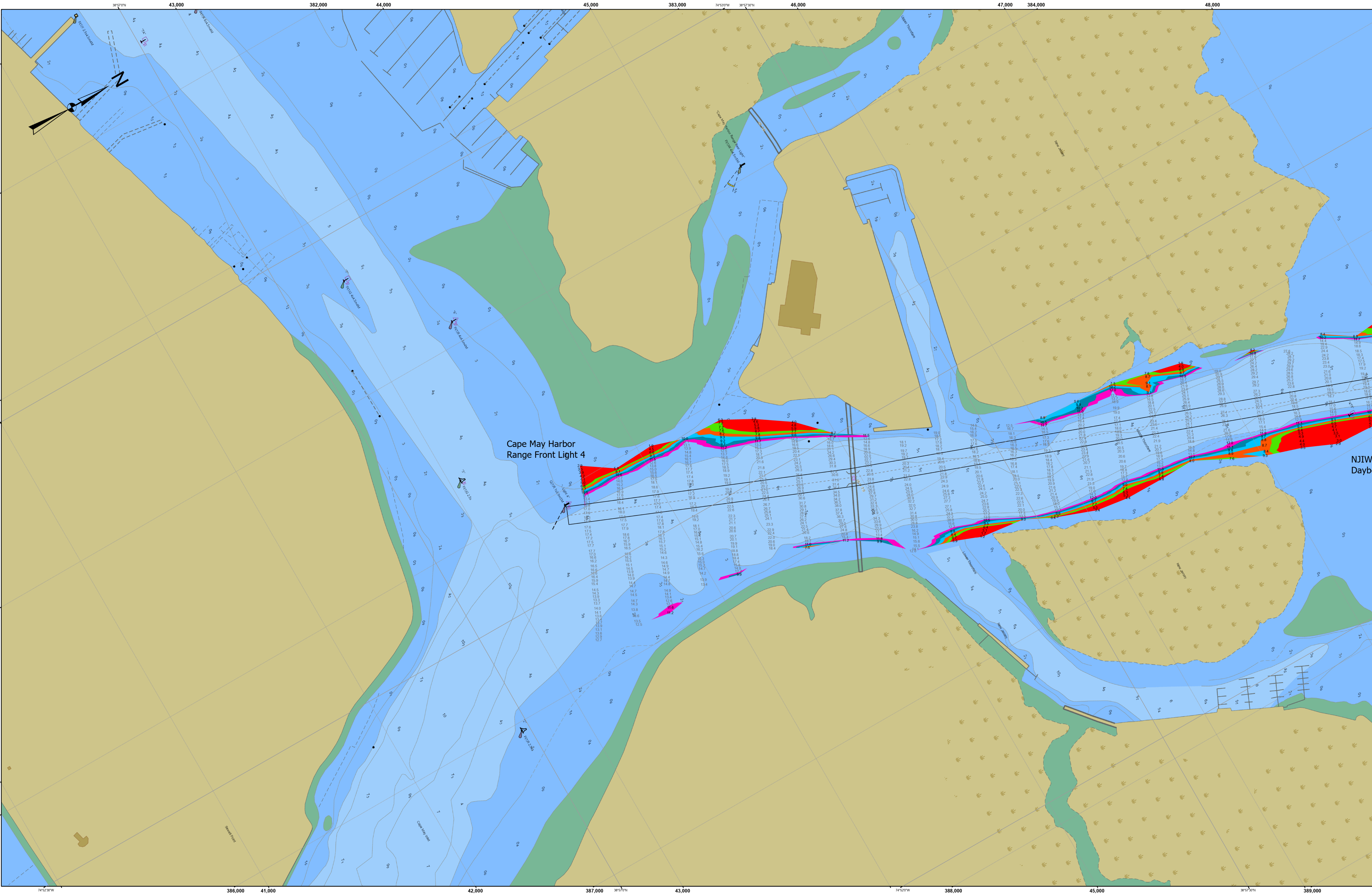
Surveyed By	Checked By
U.S. ARMY CORPS OF ENGINEERS PHILADELPHIA DISTRICT	E. MILLER
Drawn By	Checked By
Final Scale	Checked By
Approved	Chief, Survey Section

NEW JERSEY INTRACOASTAL WATERWAY

IW 16 - MRK #441 to Cape May Harbor

EXAMINATION

E-IW-43



THIS SURVEY MEETS STANDARDS AS OUTLINED IN CORPS OF ENGINEERS' HYDROGRAPHIC SURVEY MANUAL EM1110-2-1003, DATED NOVEMBER 30, 2013 FOR NAVIGATION AND DREDGING SUPPORT SURVEYS.

HORIZONTAL REFERENCE - NAD 83, NEW JERSEY STATE PLANE, ZONE 2900, U.S. FOOT.

VERTICAL REFERENCE - MEAN LOWER LOW WATER, WHICH IS 2.73' BELOW N.A.V.D. 88.

GEOID 18 AND NOAA TIDAL EPOCH: 1983 - 2001 WERE USED. SOUNDINGS ARE EXPRESSED IN FEET AND TENTHS AND REFER TO MEAN LOWER LOW WATER.

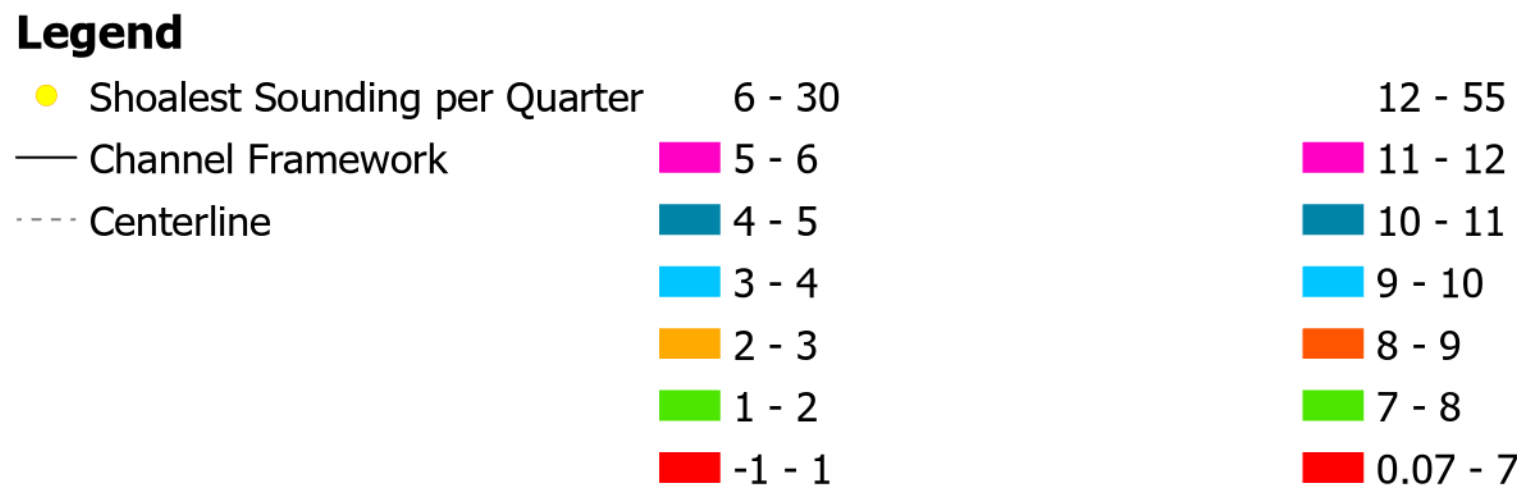
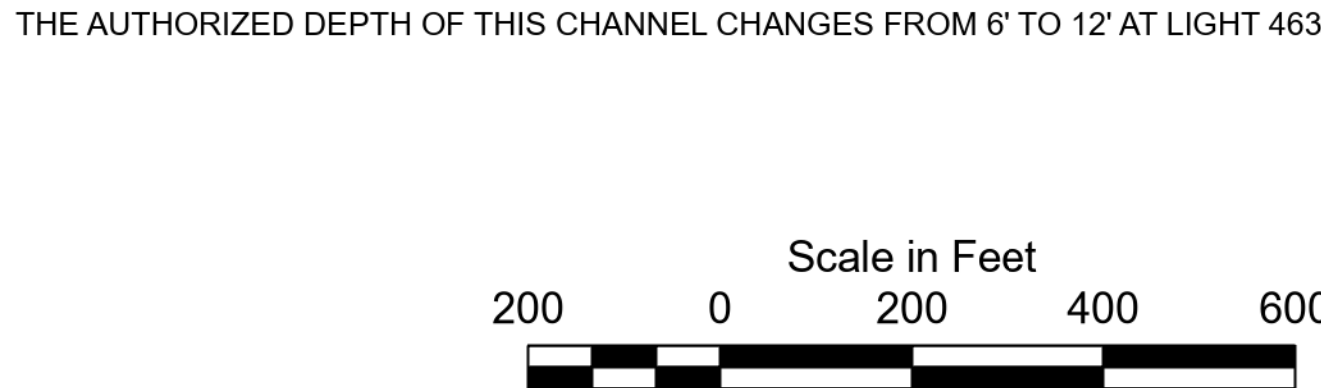
THE INFORMATION DEPICTED ON THIS MAP REPRESENT THE RESULTS OF SURVEYS MADE ON THE DATES INDICATED AND CAN ONLY BE CONSIDERED AS INDICATING THE GENERAL CONDITIONS EXISTING AT THAT TIME.

THE POSITIONS OF THE AIDS TO NAVIGATION ARE PROVIDED FOR INFORMATION ONLY, AND SHOULD NOT BE USED FOR NAVIGATION.

THE LIMITS OF THE FEDERAL CHANNEL DEPICT THE MOST CURRENT CHANNEL FRAMEWORK AVAILABLE WHICH CAN ALSO BE DOWNLOADED HERE:

<http://navigation.usace.army.mil/Survey/Framework>

BASE MAPPING LINEWORK OR ORTHOPHOTOGRAPHY HAS BEEN COMPILED FROM A VARIETY OF SOURCES AND DATES AND IS INTENDED TO PORTRAY GENERAL CHARACTERISTICS OF THE SHORELINE AND OTHER FEATURES. TEMPORAL CHANGES MAY HAVE OCCURRED SINCE THIS DATA SET WAS COLLECTED AND SOME PARTS OF THE DATA MAY NO LONGER BE AN ACCURATE REPRESENTATION OF THE SURFACE CONDITIONS.



US Army Corps of Engineers
Philadelphia District

MRK #441 to MRK #442 -- 13 JUN 24
MRK #442 to MRK #446 -- 26 JUN 24
MRK #446 to MRK #457 -- 04 DEC 24
MRK #457 to MRK #463 -- 27 FEB 24
MRK #463 to MRK #471 -- 26 FEB 24
MRK #471 to MRK #4CMH -- 22 FEB 24

The information provided herein is for informational purposes only and is not intended to be used for navigation. The information is provided as a service to the public and is not intended to be used for navigation. The information is provided as a service to the public and is not intended to be used for navigation. The information is provided as a service to the public and is not intended to be used for navigation.

NEW JERSEY INTRACOASTAL WATERWAY
IW 16 - MRK #441 to Cape May Harbor
EXAMINATION

E-IW-43